

Silo & Ground Storage

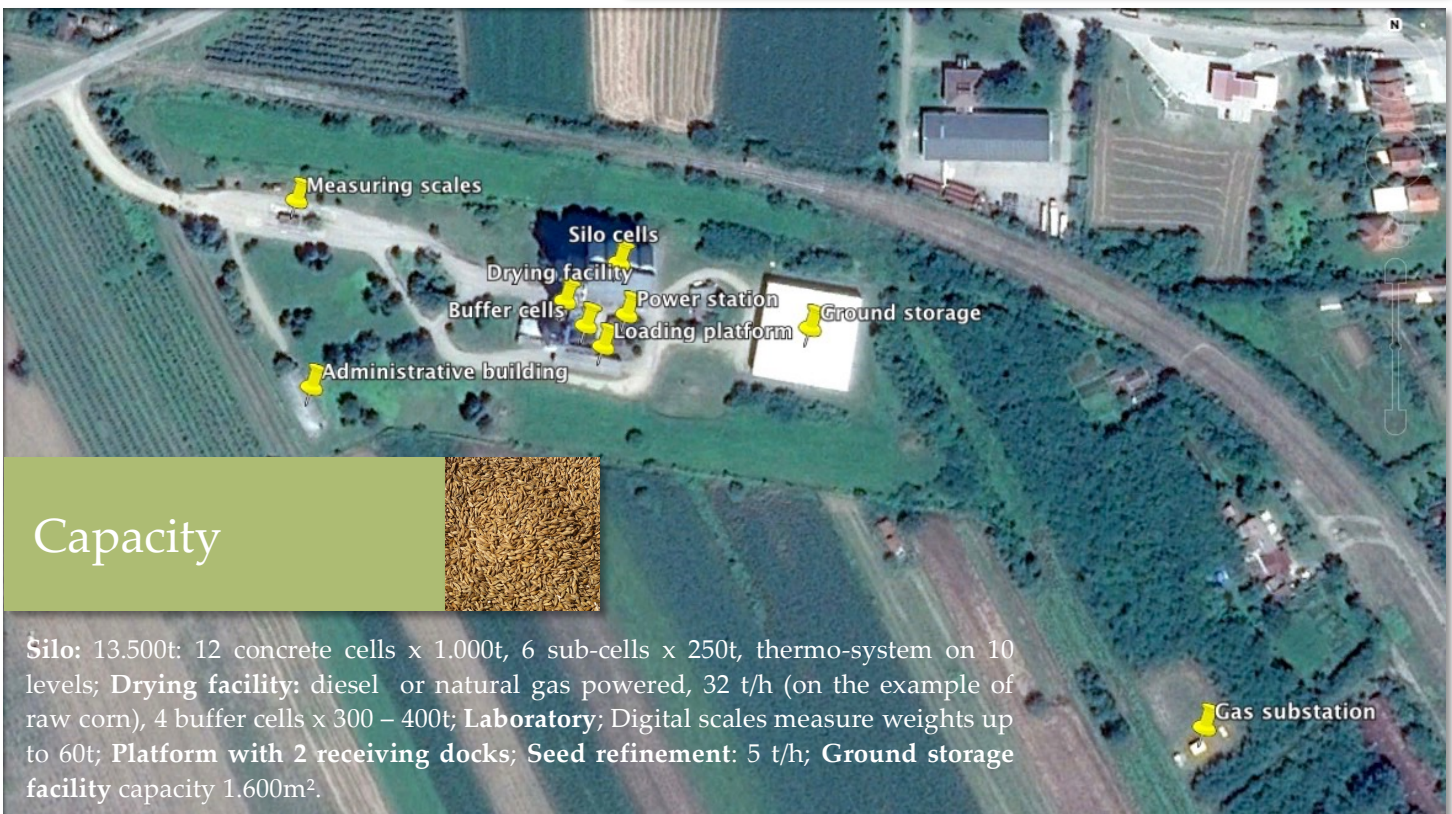
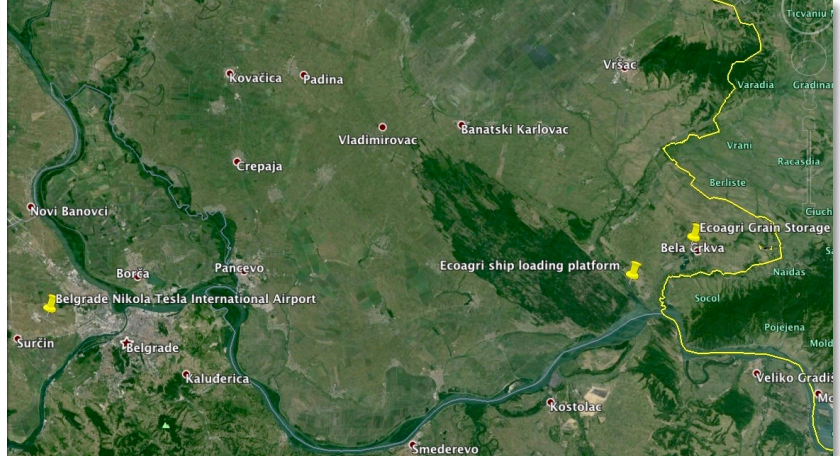
financial investment, crops trade, vertical integration

Bela Crkva, south Banat on Danube, Vojvodina, Serbia

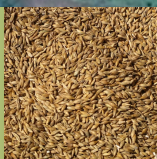
Location



Facilities complex built in 1980 is situated in Bela Crkva [wait tʃɜ:tʃ] (*White Church, Weisskirchen*), only 90 min ride from the Belgrade Airport. It is equipped with a natural gas station, water and sewer system, power station, and power grid connection. 12 km away is a dedicated loading spot-on, on DTD channel, 3 km before the confluence of Danube river.



Capacity



Silo: 13.500t: 12 concrete cells x 1.000t, 6 sub-cells x 250t, thermo-system on 10 levels; **Drying facility:** diesel or natural gas powered, 32 t/h (on the example of raw corn), 4 buffer cells x 300 – 400t; **Laboratory:** Digital scales measure weights up to 60t; **Platform with 2 receiving docks;** **Seed refinement:** 5 t/h; **Ground storage facility capacity 1.600m².**

Supply



22,000 ha cultivated fields in the vicinity, mostly planted with field crops.

Quality

Facilities complex is certified for intake, processing and warehousing of organic products, through application of **HCCP** and **ISO 9001** standards. It is certified by the domestic and international (**EU Bio**, **Bio Suisse**) authorities in the domain of stocking organic crops (*only mechanical cleaning allowed**). Export of products to EU and CH, is a proof of efficiency, skill and professionalism.

Facilities complex holds a permit issued by the Serbian Ministry of Agriculture and Forestry for the storage of agricultural products, (permit for disinfection, deratization, and disinsection)*, as well as the permit to perform processing of wheat and soya seeds.



Facilities and equipment

- 1. Silo cells** ($P=725m^2$, $V=50-52m$) capacity 13.500t= $12*1,000t + 6*250t$; thermos-system on 10 levels, processing center with line capacity 5t/h; passengers' elevator; foundation made from reinforced concrete, massive lifting construction of silo cells (reinforced concrete shell 20cm wide); high voltage power station; water sprinkler system; income from base station antennas for mobile providers bringing net 18,000 EUR revenues per annum;
- 2. Buffer cells** ($P=33m^2$, $H=24m$) capacity 700t= $2*350t$; foundation made from reinforced concrete, massive lifting construction (reinforced concrete shell 20cm wide); high voltage power station, water sprinkler system
- 3. Drying facility** ($P=173m^2$, $H=24m$) type "Pobeda – VSZ – 9" capacity 32t/h (raw corn) with accompanying rooms; foundation made from reinforced concrete light support construction, full tin outer, concrete floor; electrical installations, water sprinkler system
- 4. Ground storage** ($P=1,525 m^2$, $V=8-9m$) with 4 entrances/exits; reinforced concrete striped foundation connected with counter-beams, reinforced concrete filling of façade walls, steel panels on the roof(sub)construction, concrete industrial floor; electrical installations, water sprinkler system
- 5. Measuring scales** with the accompanying building ($P= 22.3m^2$, $V=2.2m$); capacity: 120t= $2*60t$; reinforced concrete foundation; scales planted in the ground; platforms with ramps on the road level; reinforced concrete construction of the accompanying building layered with bricks; reinforced concrete roof panel; concrete floors; mortared and painted facade; electrical installations; telephone; internet; fire protection; air-conditioning system
- 6. Loading platform** with cover ($P=180m^2$, $V=4.5-5m$); reinforced concrete platform; on the ground level is the steel construction of the intake container and hydraulic equipment of loading scales; mechanical and electrical installations
- 7. Power station** ($P=82m^2$, $V=3-3.5m$); brick layered reinforced concrete construction; concrete floor; electric, fire protective and machine installations
- 8. Administrative building** ($P=252m^2$, $V=3m$); reinforced concrete foundation; wooden construction; concrete floors; electro installation, water & sewage; fire protection; telephone & internet; heating & A/C

Strategic Investment Outlook

crops storage, grains trade and vertical integration

- Real value as an alternative to paper investment midst growing financial & monetary risks
- Life-crucial, in the long-run deemed to be deficient products
- Bio/organic status, impeccable condition of the facilities
- Skilled staff, proven through serving demanding customers
- Securing good quality raw materials, offsetting procurement risks



seller:
Ecoagri Serbia doo
 Bela Crkva, Banat
 office@ecoagri.rs

